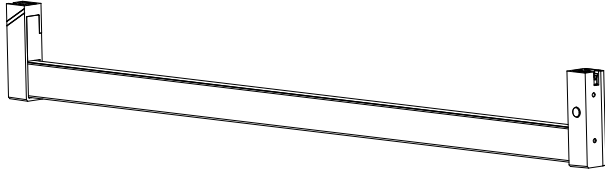


A317D Closet lamp installation instructions



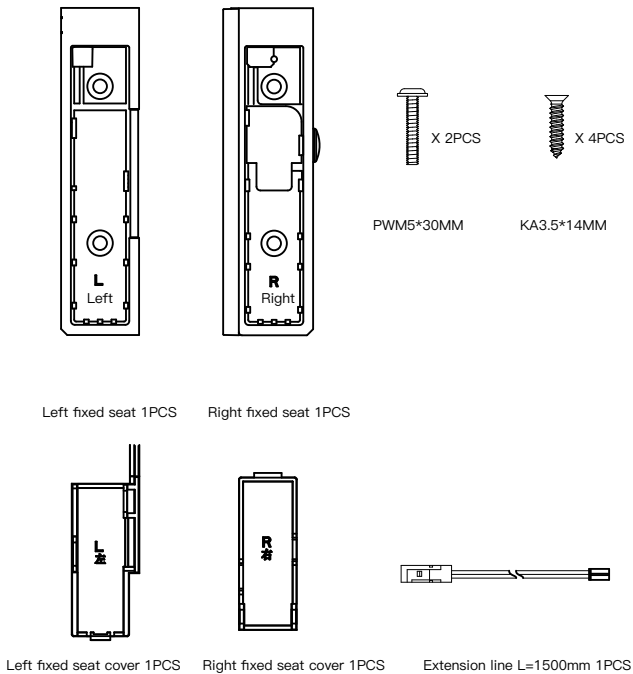
1、Product Description

This product integrates cabinet lighting and a clothes rod, providing both the functions of a clothes rod and cabinet lighting. Utilizing human body heat detection technology, it automatically turns on when someone approaches and off when they leave, with a 30±5-second lighting duration after activation, making it highly energy-efficient. The product is installed on a base, facilitating daily maintenance and repair.

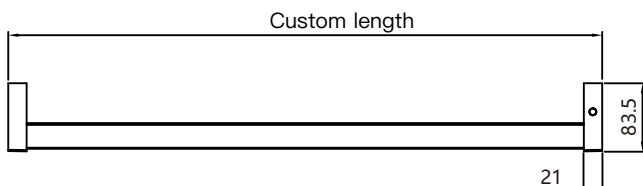
2、Second, matters needing attention

1. For indoor use only.
2. Please check the wires, transformers and other parts for damage regularly. If any parts are damaged, please repair them in time.
3. Do not install the lamp where water droplets leak.
4. The light source of this product is a non-replaceable LED lamp.
5. When installing and using the lamp, please strictly follow the requirements of this manual and keep it for future use.

Fittings of a machine:

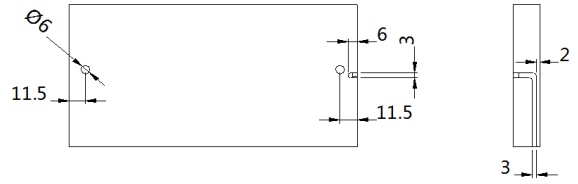


3、Product size

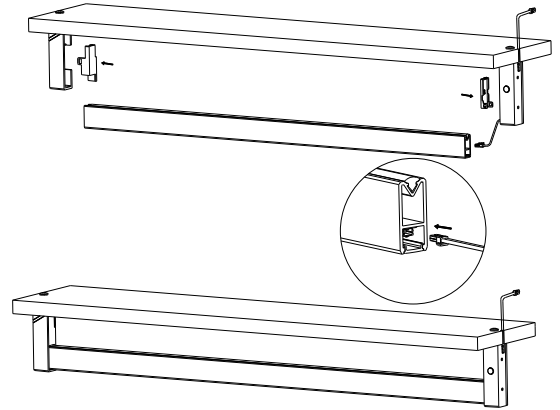


4、Top installation steps

1. Process the panels according to the size drawing.

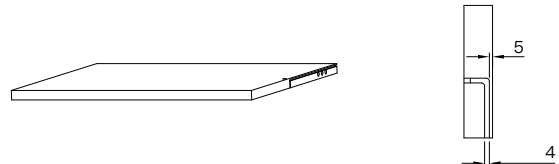


2. Connect the terminal wire to the lamp terminal, and insert the connected terminals into the interior of the lamp body. Then put the clothes rod lamp on the base, and assemble the left and right decorative covers to complete the installation.

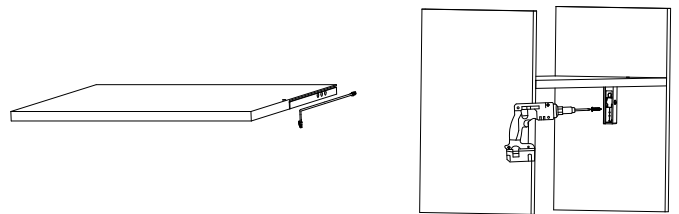


5、Side installation steps

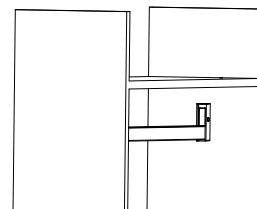
1. The wood board is processed according to the hole size diagram, and the outlet slot is 4mm wide and 5mm deep.



2. Before assembling the panel, put the terminal wire into the wiring groove of the panel, connect the terminal with the terminal on the upper end of the right fixing seat, and install the left and right bases on the side plate with KA3.5*14 countersunk self-tapping screws.



3. Connect the terminal on the fixing seat to the lamp base, place the clothes rod lamp on the fixing seat, and install the left and right decorative covers to complete the installation.



Scene application

