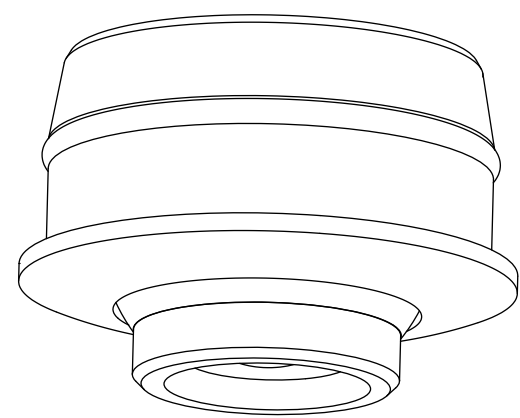


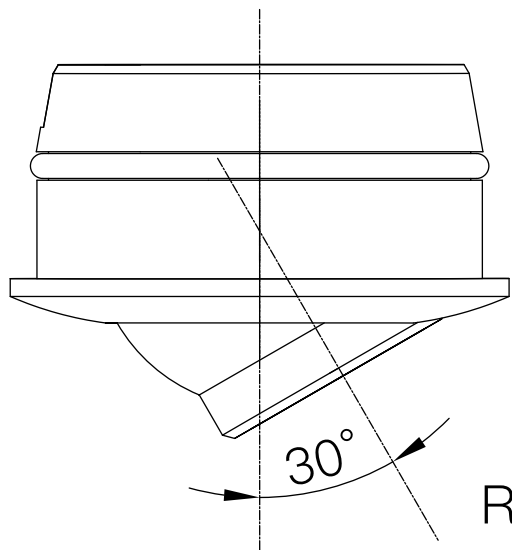
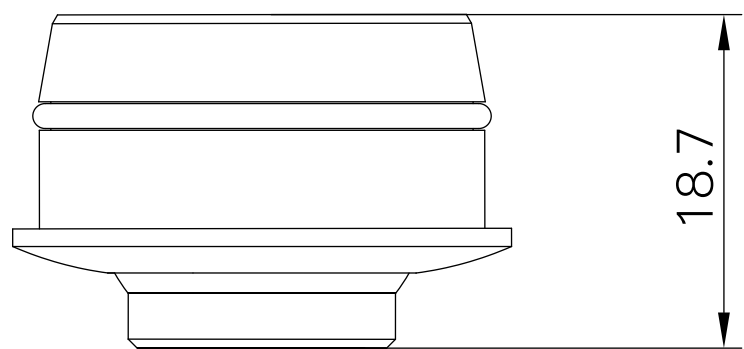
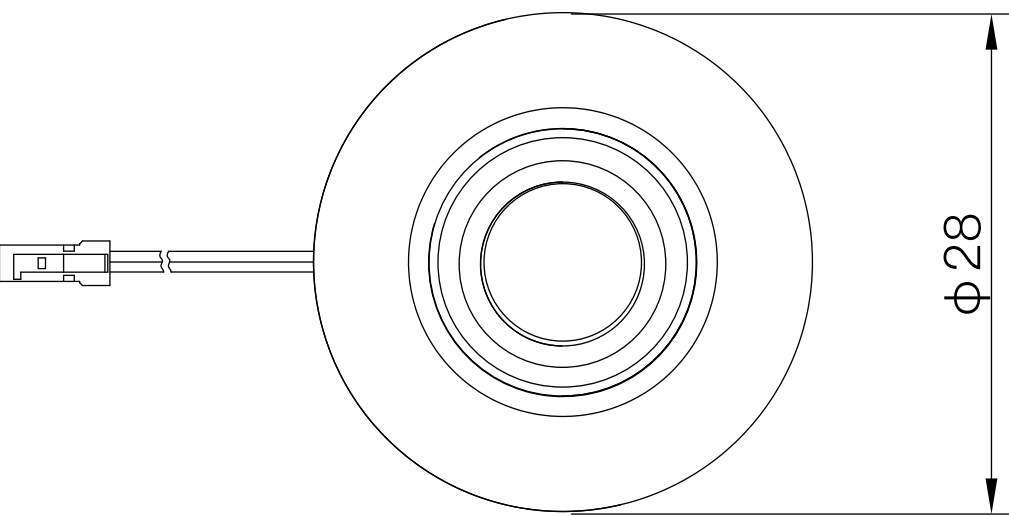
A1117 Embedded rotating focus spotlight  
installation manual



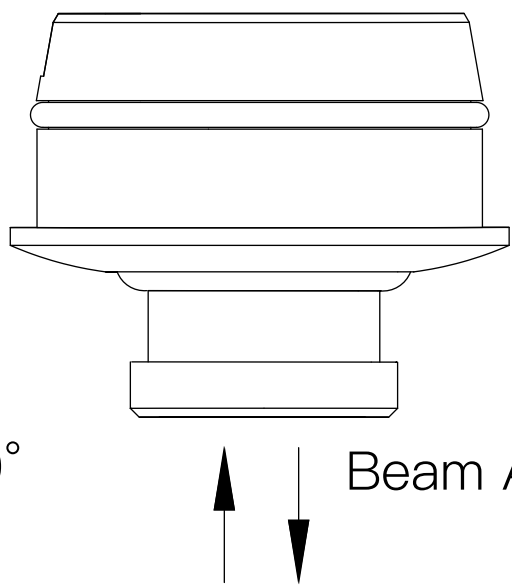
1. Important Safety Instructions

- 1. For indoor use only.
- 2. Please regularly check that the wires, transformers and all other parts are not damaged. If any part is damaged, the product should not be used.
- 3. When installing and using this lamp, please strictly follow the requirements of this manual. Keep this manual for future use.
- 4. The light source of this product is a non-replaceable light emitting diode (LED).
- 5. Please do not install the lamp where water droplets leak.
- 6. Please use a dry cloth to clean, do not use strong cleaning agent.

2. Product specifications



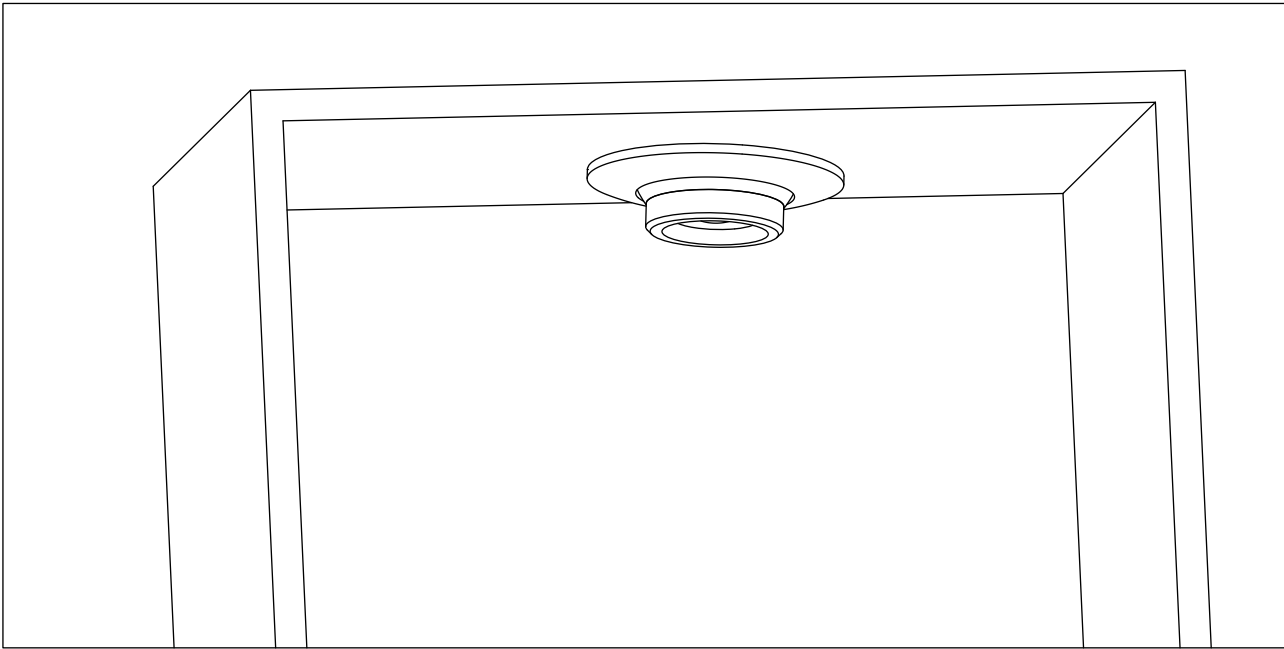
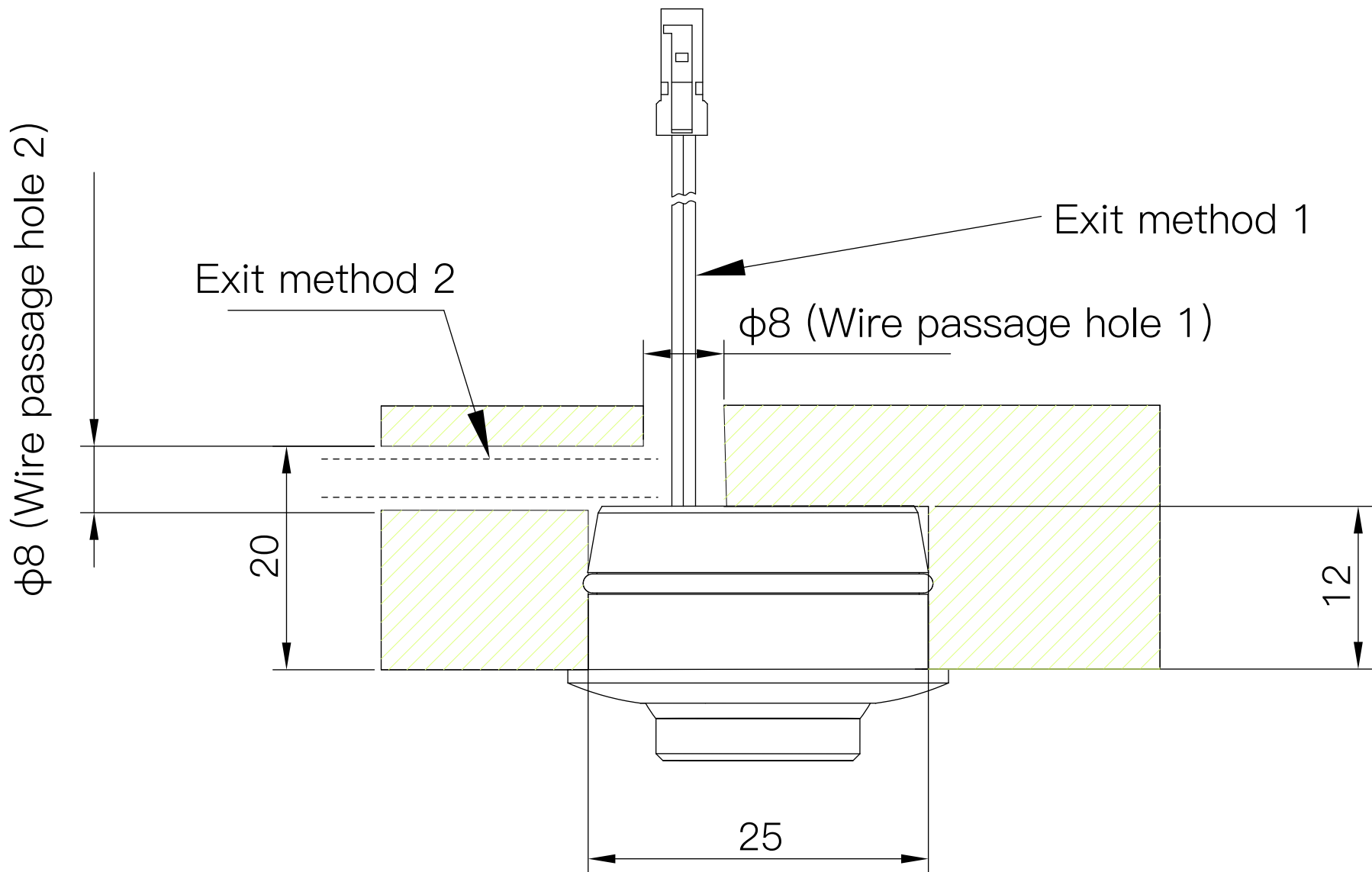
Rotation Angle 0~30°



Beam Angle 15~60°

product name	Specification and size	Opening size	working voltage (DC)	Product power	Color temperature
A1117	φ28*18.7	φ25*12	12V	1W±0.2	WW:3000K NW:4000K CW:6000K

Installation method: Open the hole in accordance with the following method



Wireless slot installation status of the top plate

3. Schematic diagram of lamp connection

